



# BEST2 Polyclonal Antibody

<b>Catalog No</b>	YP-Ab-14284
<b>Isotype</b>	IgG
<b>Reactivity</b>	Mouse;Rat
<b>Applications</b>	WB;IHC;IF
<b>Gene Name</b>	BEST2
<b>Protein Name</b>	Bestrophin-2
<b>Immunogen</b>	Synthetic Peptide of BEST2
<b>Specificity</b>	The antibody detects endogenous BEST2 protein.
<b>Formulation</b>	PBS, pH 7.4, containing 0.5%BSA, 0.02% sodium azide as Preservative and 50% Glycerol.
<b>Source</b>	Polyclonal, Rabbit,IgG
<b>Purification</b>	The antibody was affinity-purified from rabbit antiserum by affinity-chromatography using epitope-specific immunogen.
<b>Dilution</b>	WB: 1:500-1000 IHC: 1:200-500. IF 1:50-200
<b>Concentration</b>	1 mg/ml
<b>Purity</b>	≥90%
<b>Storage Stability</b>	-20°C/1 year
<b>Synonyms</b>	Bestrophin-2; Vitelliform macular dystrophy 2-like protein 1
<b>Observed Band</b>	50kD
<b>Cell Pathway</b>	Cell membrane; Multi-pass membrane protein.
<b>Tissue Specificity</b>	Mainly confined to the retinal pigment epithelium and colon.
<b>Function</b>	function:Forms calcium-sensitive chloride channels. May conduct other physiologically significant anions such as bicarbonate.,similarity:Belongs to the bestrophin family.,tissue specificity:Mainly confined to the retinal pigment epithelium and colon.,
<b>Background</b>	This gene is a member of the bestrophin gene family of anion channels. Bestrophin genes share a similar gene structure with highly conserved exon-intron boundaries, but with distinct 3' ends. Bestrophins are transmembrane proteins that contain a homologous region rich in aromatic residues, including an invariant arg-phe-pro motif. Mutation in one of the family members (bestrophin 1) is associated with vitelliform macular dystrophy. The bestrophin 2 gene is mainly expressed in the retinal pigment epithelium and colon. [provided by RefSeq, Jul 2008],



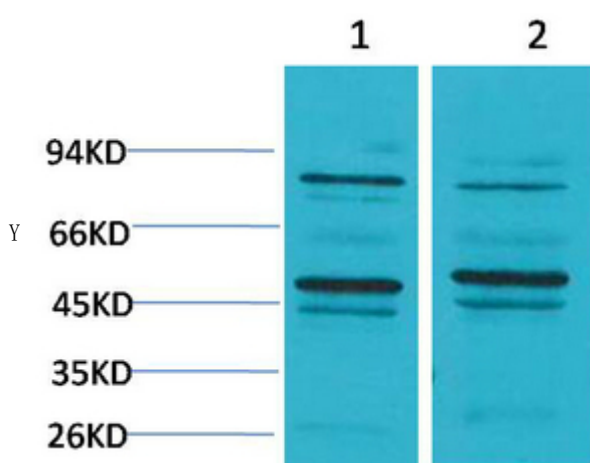
**matters needing attention**

Avoid repeated freezing and thawing!

**Usage suggestions**

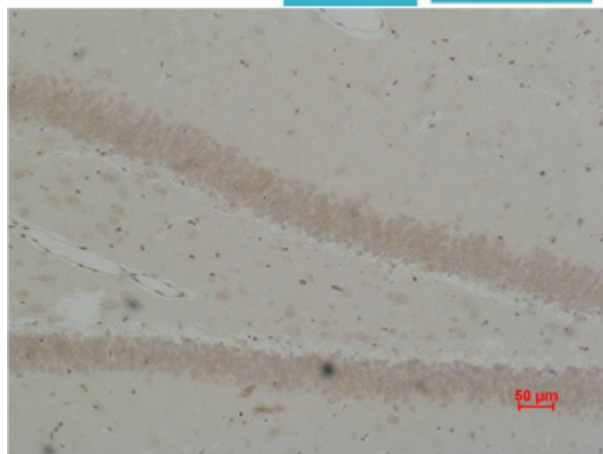
This product can be used in immunological reaction related experiments. For more information, please consult technical personnel.

**Products Images**



Western blot analysis of 1) Mouse Brain Tissue, 2) Rat Brain Tissue using BEST2 Polyclonal Antibody.

Secondary antibody(catalog#:RS0002) was diluted at 1:20000



Immunohistochemical analysis of paraffin-embedded Rat Brain Tissue using BEST2 Polyclonal Antibody.